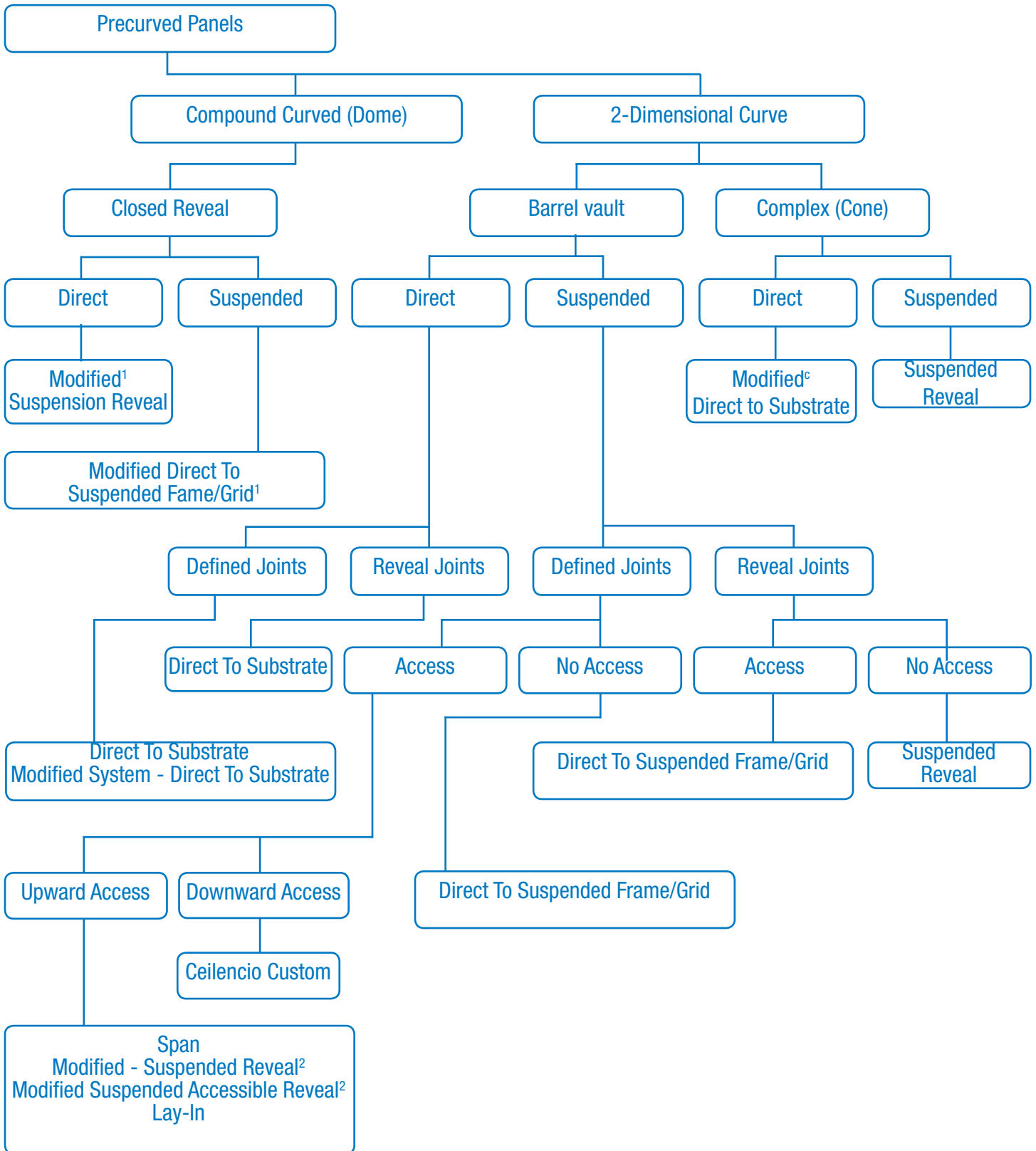


# Decoustics Ceiling Selection Chart



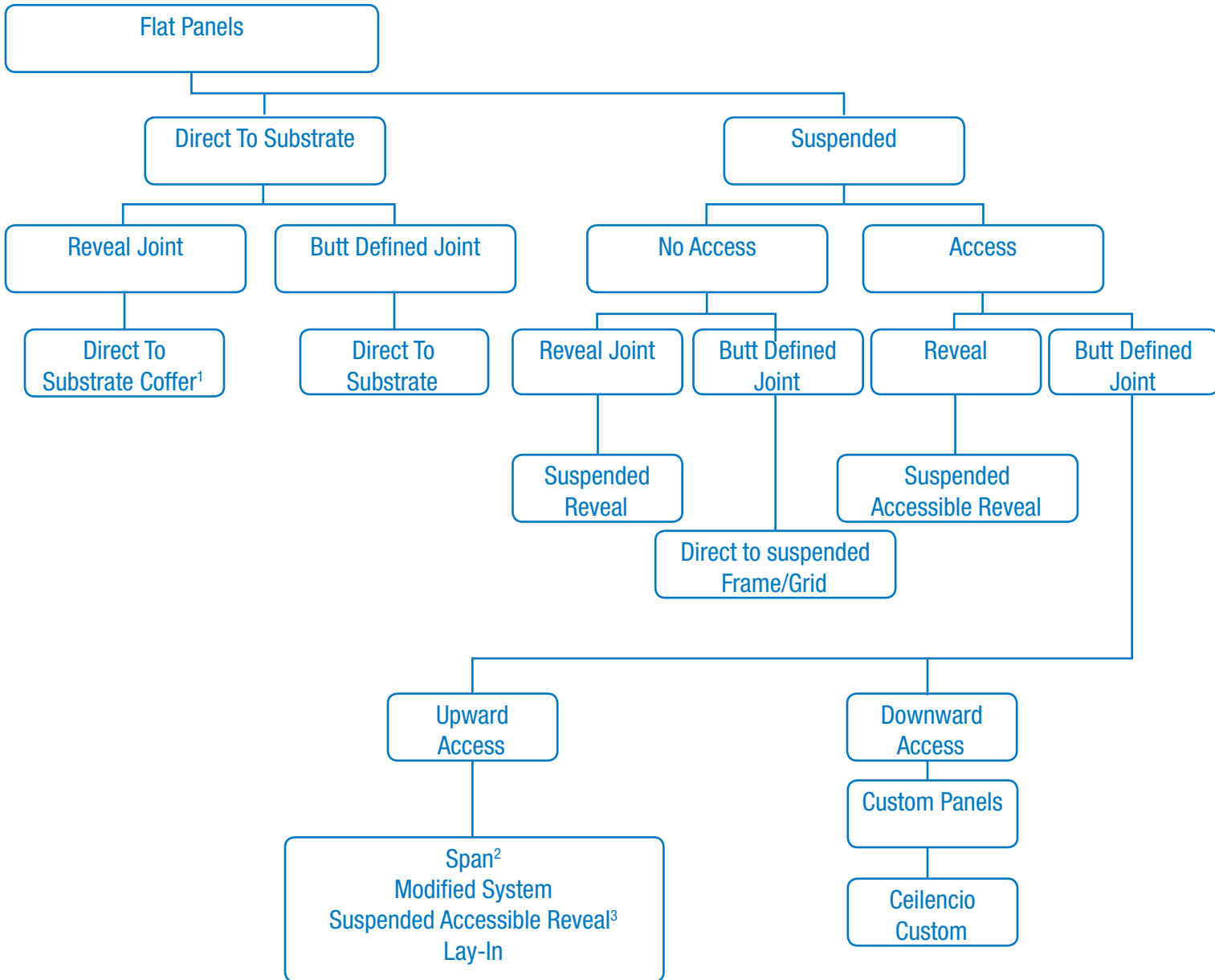
Notes

1. Very limited access
2. Limited access – less than 52%
3. Closed reveal or reveal joints available.

# Decoustics Ceiling Selection Chart

Questions to ask

- A. Is the ceiling direct to substrate or suspended?
- B. If suspended, is access required – and how much (50% - 100%)?
- C. If suspended, is upward or downward access required?
- D. What panel size or module is required?
- E. If precurved, is it simple (barrel vault), complex (cone) or curved (dome)?



## Notes

1. System 'Coffered' – used in coffer (waffle) locations. Some size limitations. Needs template to install mounting hardware
2. System 'Span' – single span panels (corridor). Depending on panel size, there may be limited access.
3. Modified system "Suspended Accessible Reveal" – limited panel access (less than 50%).
4. Limited panel sizes
5. Standard panels ie. 2' x 2' , 2' x 4' , 4' x 4' , 5' x 5'